

# ANB EDUCATION



## Table of Contents

**01**

---

**Sponsor Information**

**02**

---

**J1 Program Overview**

## AnB Education

AnB Education by Summa Global Education has over 26 years experience developing rewarding relationships between international students and their families, schools, and communities.

Providing students with a stable environment helps foster goal setting and encourages the sharing of ideas. We cultivate an environment where students can embrace challenges and explore their potential with a sense of adventure. We are currently working with hundreds of high schools and host families in the U.S.

AnB Education operates the boarding facilities for Conwell-Egan Catholic High School, on the school's campus located in Pennsylvania. The dormitory is staffed 24/7 with AnB Education staff and offers ESL tutoring, group activities and group trips.



## VISION

AnB Education is a place for innovation, where people with a passion for inspiring students to embrace challenges, achieve their potential, and go above and beyond to reach success. We are committed to cultivating a new generation of leaders

## MISSION

AnB Education creates a safe and ideal environment where international students can overcome their educational challenge and reach their full potential.

By providing purpose, vision, direction and motivation for students who are achieving their goals, AnB Education will inspire, influence and empower our students to become leaders of their generations.

## VALUE

- **Integrity**

AnB Education staff, students and families are held to the highest standards and strong moral principles to positively affect all parties involved.

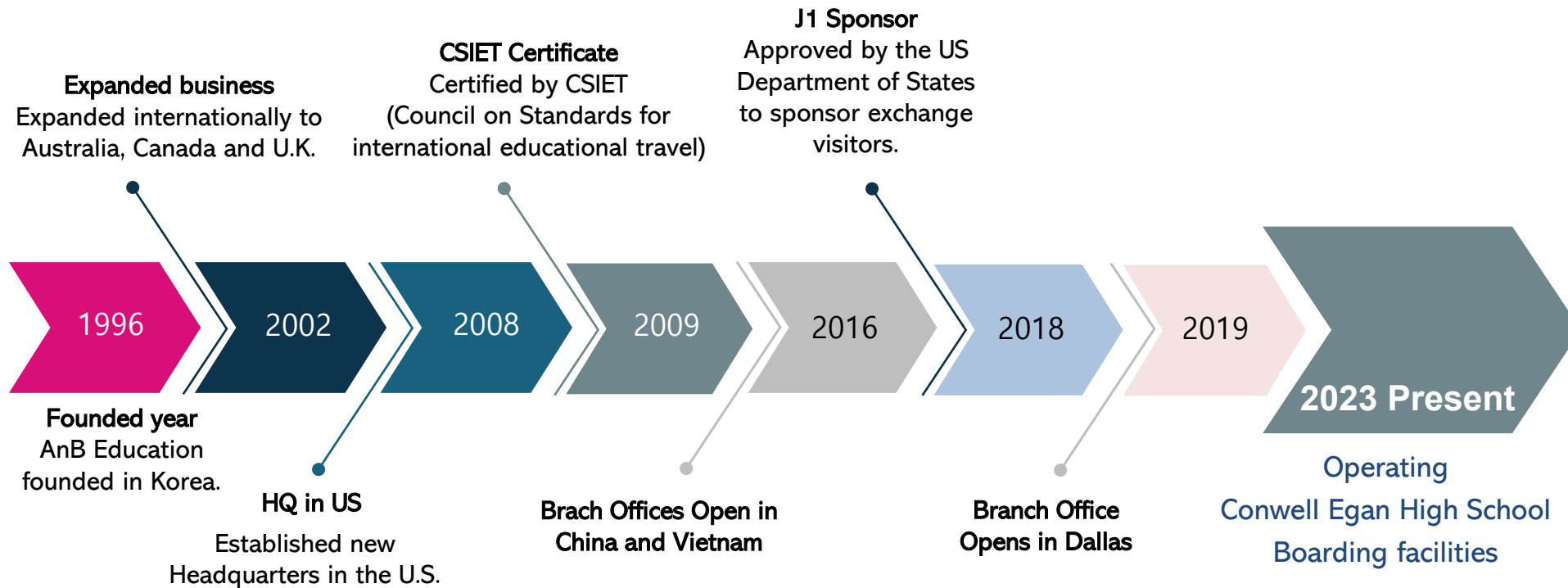
- **Sharing**

With team work and effective communication, AnB Education collaborates with our students and families in order to share the cultures and lives of one another through education.

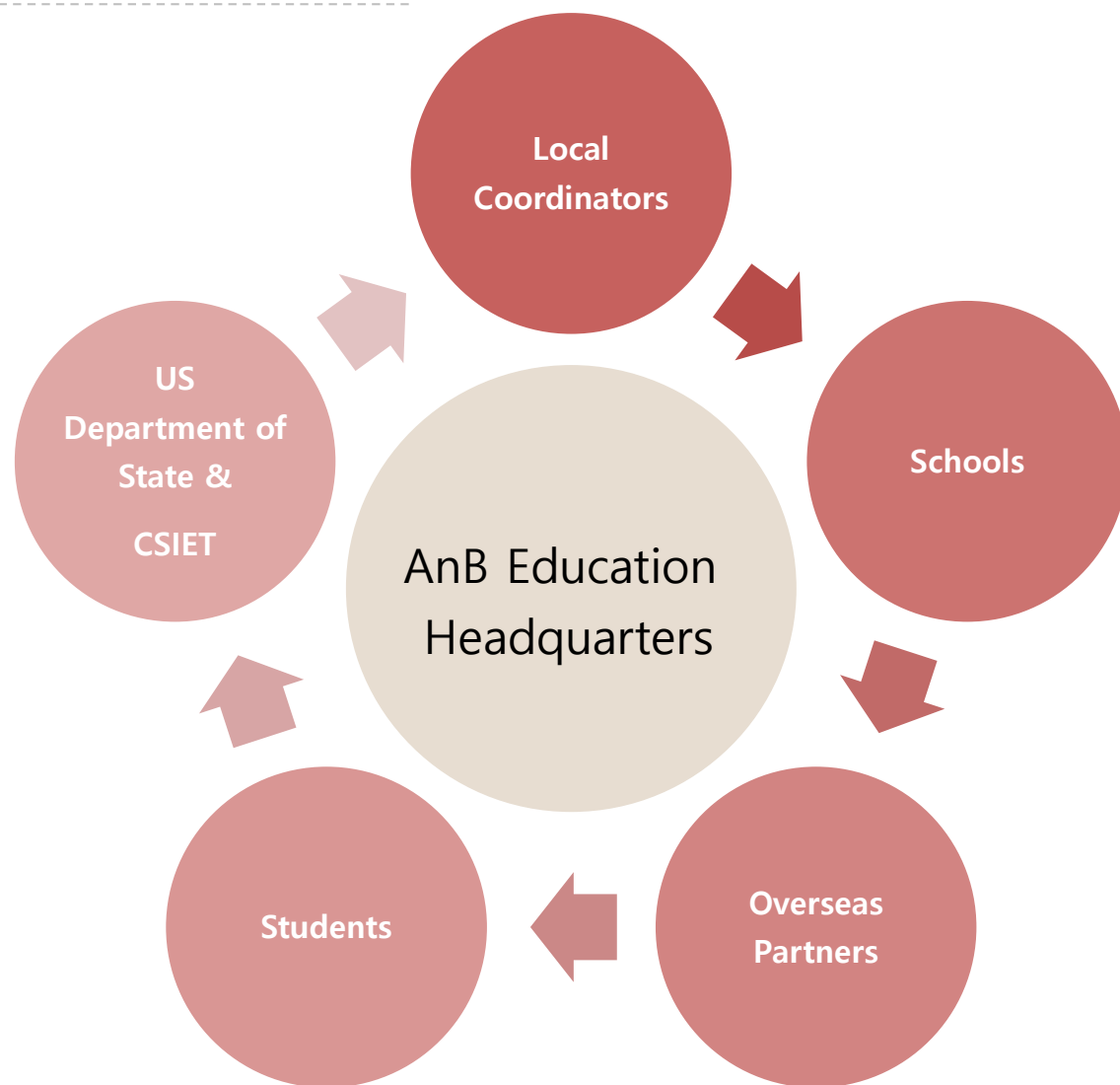
- **Accomplishing**

AnB Education staff, students and families achieve a sense of fulfillment by accomplishing our goals proficiently.

# Our History



# Organization Structure

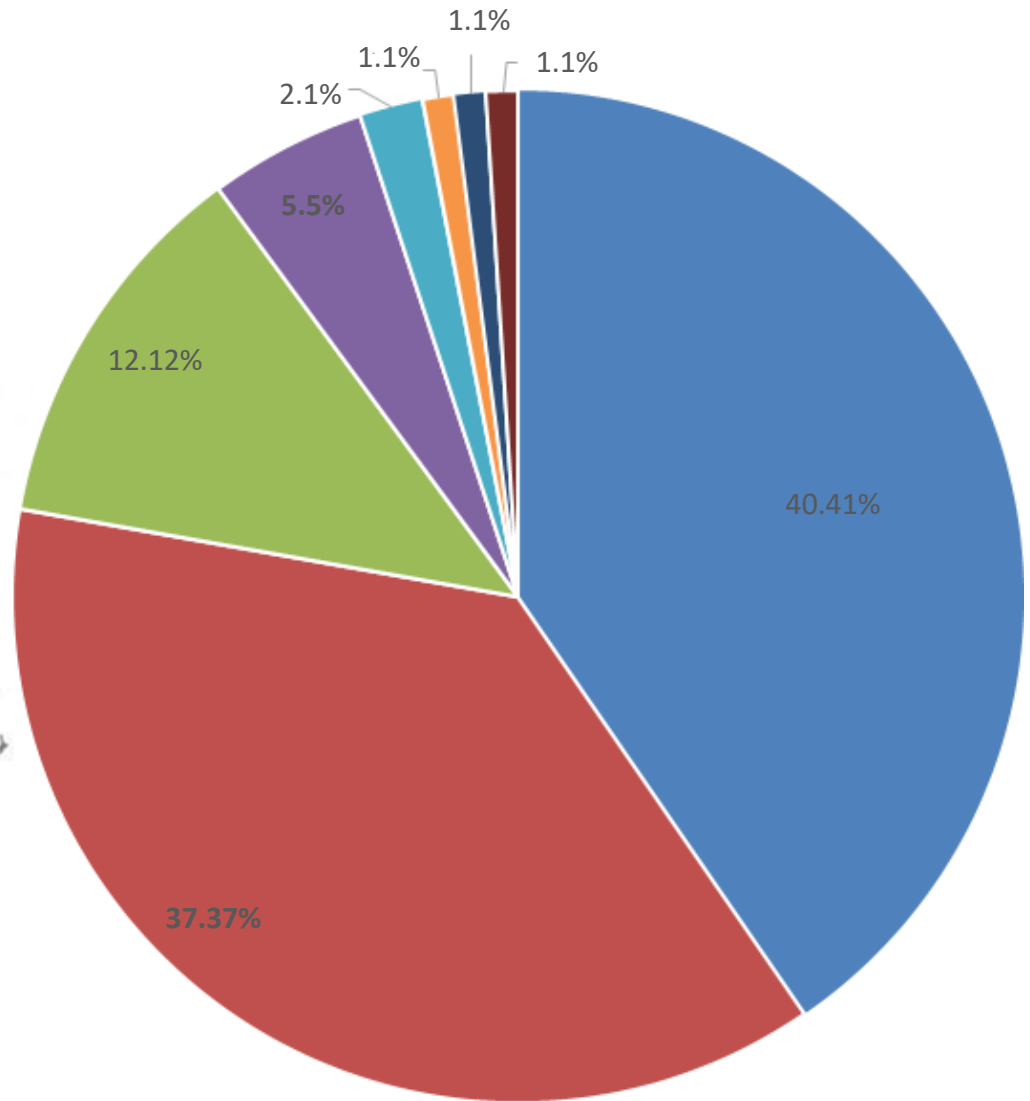


# Local Coordinators



- Our local coordinators support schools and families in a given area from the day the students arrive until the day they return home.
- We currently have more than 30 local coordinators throughout the U.S.

# Student Diversity



## J1 Program Overview

# Exchange High School Program

The U.S. Department of state administers the Exchange Visitor Program under the provisions of the Mutual Educational and Cultural Exchange Act of 1961, as amended. The Act promotes mutual understanding between the people of the United States and other countries by means of educational and cultural exchange.

The Exchange Visitor Program provides foreign nationals opportunities to participate in exchange programs in the United States with the expectation that on completion of their exchange program, students will return home to share their experiences.

AnB Education will help exchange students to immerse in the American daily life through local public high school and host family.



---

# J1 program feature and student qualification

---

## Feature of J1 Program

Unlike the F-1 program which places students primarily at private schools, the J-1 program facilitates admission to US public schools through the Department of State and a sponsoring organization. J-1 students live with volunteer host families and study at a local public school for one semester or up to one academic year.

The US government expects J-1 students to be ambassadors for their home country while they are studying in the US, and return to their home country with a greater understanding and appreciation of American culture and values.

J-1 students will be fully emerged in American culture during their time in the US with their host families, schools, and communities.

## Student Qualification

### Student qualification

AnB Education screens applicants thoroughly to select J-1 students who will participate successfully in this honored program.

- ✓ **English ability**– Students must have strong English skills in order to study in a US public high school and live with an American host family. The minimum accepted score for ELTiS is 222 and 60 for TOEFL.
- ✓ **School Grade**– Students overall grade should be above a B average in their home country
- ✓ **Character**– a student's character is the most important factor determining whether or not they can complete the J-1 program successfully. AnB is looking for students who are motivated, adaptable, and independent. Importantly, prospective students should be ready to share about their home country and culture, learn about American culture, and face challenges in a new environment.
- ✓ **Health** – Students who have any serious illness or are prone to sickness are not fit for the J-1 program.

---

# Difference between J1 program and F1 program

---

The differences between J-1 Public High School Exchange Program and F1 private High School Program are largely as followed.

J1 Public Exchange is not about studying in the U.S. and is not about going to a good university. The focus is **not just on education, but more on cultural exchange**. If you're just trying to study, you should choose to study abroad instead. (Of course, if you begin with the J1 program for the first year and then continue the F1 program, that's a great way to save money.) This program aims to learn about America through volunteer work, such as a lot of club activities and a variety of experiences with host families while in the United States.

Therefore, the **corresponding regulations are strict**. If you neglect your studies and obtain a grade of B or lower, or if you violate the regulations of your school and foundation, you will have to return to your home country without exception. Another big difference is the **cost**. Compare to the F1 private school program, which usually requires more than \$30,000, J1 program is the most cost-effective for education and living in the U.S. for an estimated cost of \$13,500 - \$15,500 per year. Finally, in order for this program to succeed, you will need to select a **solid foundation** because good schools and host families are determined by the foundation.

To summarize the differences between the two programs, [please go to the next page ->](#)

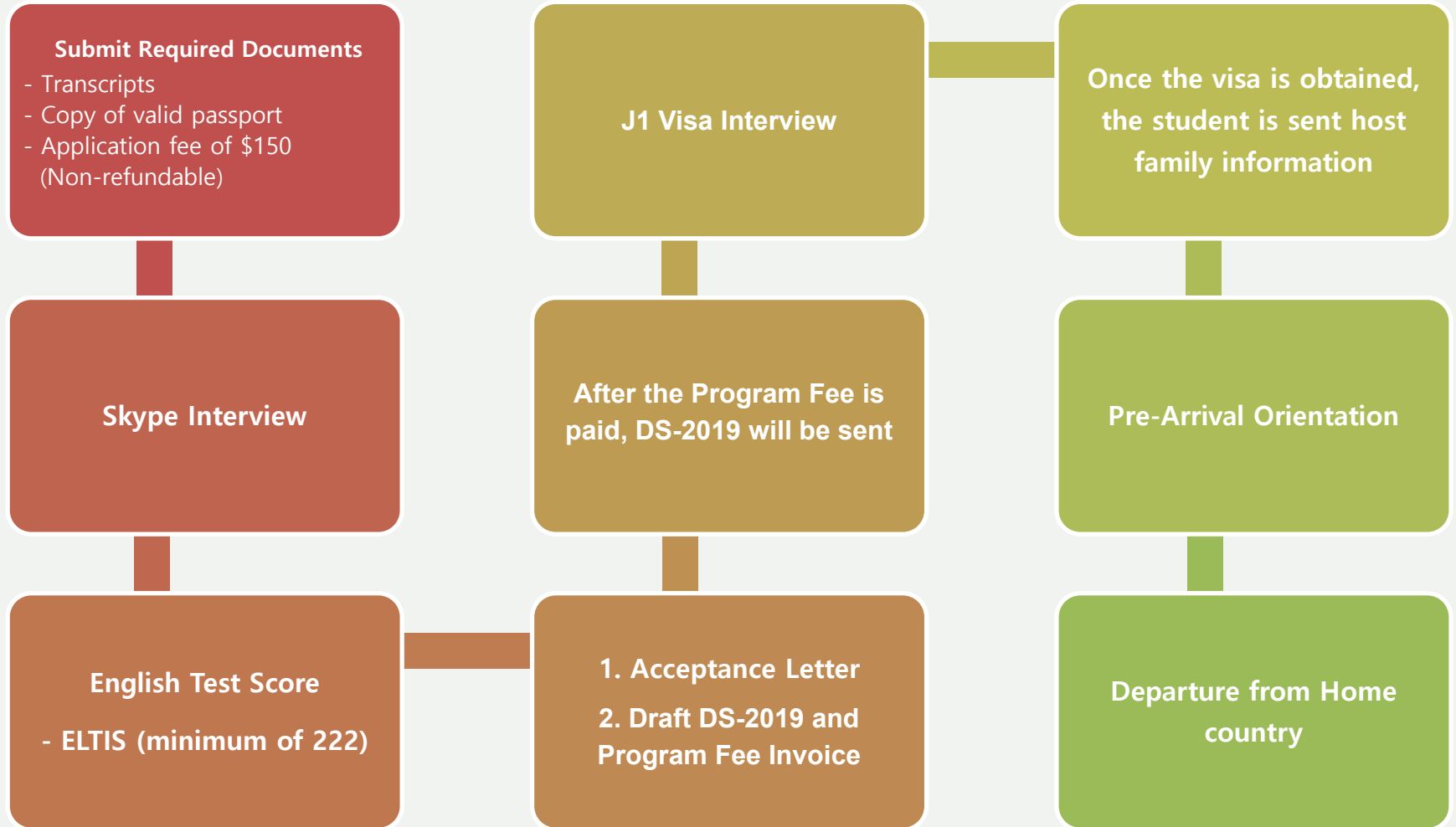
---

# F1 & J1 Program Comparison

	F1 Program	J1 Program
<b>Purpose</b>	Academic Achievement & Cultural Exchange	Cultural Exchange
<b>Age Limit</b>	No limit up to 21	15-18.5
<b>Application Deadline</b>	Fall Semester : July Spring Semester: December	Fall Semester: March 31st
<b>School</b>	Private High School or Public High School for 1 year (ability to choose)	Public High School (no choice) or Private school with choice <i>* Private school option is only if student is not placed in Public school with volunteering HF on time</i>
<b>Host Family Choice</b>	Vetted host family (ability to choose)	Vetted host family (no choice)
<b>Sponsor</b>	Parent	AnB Education
<b>Visa</b>	F1 (I-20)	J1 (DS-2019)
<b>Requirement</b>	Various schools available based on grades	Above "B" and Above ELTIS 222
<b>Rules</b>	Strict, but exceptions	Strict
<b>Duration</b>	No Limit	1 Year
<b>US Organization Qualification</b>	Approved by CSIET	Approved by the US Department of State



# J1 Admission Process



# Arrange Host Family



- 1) We find volunteer host families across the United States
- 2) Host families are screened through host family application documentation, personal interviews at host family house, criminal background checks and reference checks.
- 3) AnB will inform our rules and regulations to the screened host family.
- 4) Student and host family will be matched accordingly
- 5) We arrange airport pick up of students by host families upon arrival.

# J1 Student Orientation

- Every student who participates in the AnB program needs to do a pre-orientation before departure from home countries.
- Local coordinator will conduct host family orientation before student arrives in US to make them to be aware of the purpose of AnB program, cultural differences and our expectation
- Once the student arrives in the U.S., our coordinators will conduct the student orientation to review cultural differences, organization's policies, and how to adjust to living with each other.



# Fall 2019 Orientation Day 1

Time	Agenda
	JFK Airport Pickup, Hotel Check-in: Hampton Inn JFK Airport
12:00-5:00pm	
5:00-5:30pm	Settle in
5:30-6:30pm	Dinner (Meeting Room)
6:30-9:30pm	<div>Orientation (Meeting Room)</div> <div>1. Welcoming ceremony and interactive activities</div> <div>a) Welcome AnB Education students and self-introductions</div> <div>b) Ice-breaker game</div> <div>c) Activity</div> <div>2. Student Orientation presentation</div> <div>a) Introduction to AnB Education</div> <div>b) American Life<ul style="list-style-type: none"><li>• How to build a good relationship with your host family</li><li>○ Keys to success with your host family</li><li>○ Communication with your host family</li><li>• Important documents</li><li>○ Finance and insurance policy</li><li>• AnB rules and guidelines</li></ul></div>



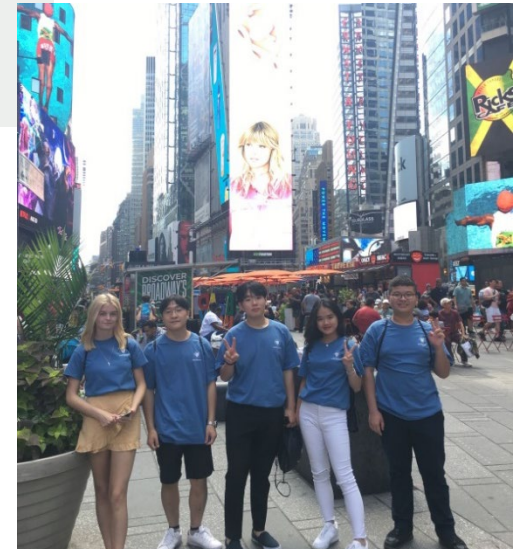
# Fall 2019 Orientation Day 2

Time	Agenda
8:00am-9:00am	Breakfast
9:00 am – 12:00 pm	Statue of Liberty Ferry, St. Patrick's Cathedral
12:00pm-1:00pm	Lunch
1:00pm-5:00pm	One World Building, Metropolitan Museum, Times Square
5:00pm-5:30pm	Back to hotel
5:30-6:30pm	Dinner (Meeting room)
6:30-9:30pm	<p>Orientation (Meeting room)</p> <ol style="list-style-type: none"> <li>Academic Life <ul style="list-style-type: none"> <li>How to thrive at school</li> <li>Keys to success at school</li> <li>Expectations for international students</li> </ul> </li> <li>Stress Management <ul style="list-style-type: none"> <li>Discussion about the causes of stress and how to overcome stress</li> <li>Introduction of help line</li> </ul> </li> <li>Q&amp;A</li> </ol>



# Fall 2019 Orientation Day 3

Time	Agenda
8:00am-9:00am	Breakfast and checkout
9:00am- 12:00pm	Picture time, JFK Airport Departures



## 2019 AnB J1 Orientation



## 2019 AnB J1 Orientation



# Student Support



AnB Education

## Monthly Report

Date: Feb/20/2019

Student's name: Pei, Boyang

School name: The Academy of Holy Angels

Local coordinator's name: Stutzman \*, Jessica

Host family name: Fox, Lauri



## Answers from Host family

### Student's academic Habits

1) On average, how long does the student study per day?	2-4 hours
2) How many day(s) was the student absent? What are the reasons?	0days / N/A
3) How many day(s) was the student late? What are the reasons?	0days / N/A

## Monthly Reports

- Our local coordinators contact the host family and student every month to assess compatibility and to respond to comments, concerns, or questions. Student will meet their local coordinator periodically in person, so they can make a close relationship to get optimal support.
- Monthly reports are forwarded to the overseas agencies every month.

## Individual / Group Meeting

- Our local coordinators meet with students in person at least once a semester to check their status and help them with their needs.
- The local coordinator organizes two semester activities, once per semester, to allow students a chance to see more of their local area or surrounding cities and learn about US culture

## Support

- Students can contact not only local coordinators, but also a student advisor who speaks their native language to ask for help.

# J1 School List

Our J1 students attended, or are currently attending, the following schools:

Austin Senior High School - MN

Center Grove High School - IN

## PENNSYLVANIA

Henderson High School  
Lower Dauphin High School  
Ephrata High School  
Perkiomen Valley High School  
Pottsville High School

Tulpehocken High School  
Roosevelt High School  
Easton Area High School  
Hershey Area High School

## MISSOURI

Grandview High School

## NEW JERSEY

Pitman High School  
West Deptford High School  
Robbinsville High School  
Bordentown Regional High School  
North Warren Regional High School

## OKLAHOMA

Broken Arrow High School  
Jenks High School

## KANSAS

Thompson High School - AL

Shawnee Mission East High School

Delmar Senior High School - DE

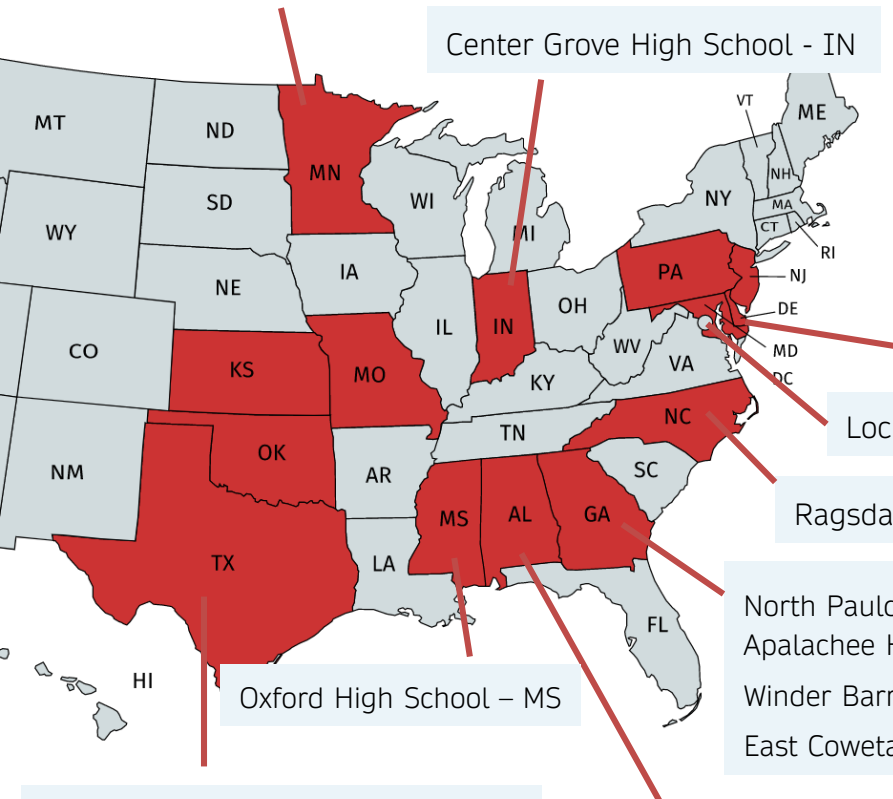
Lock Raven High School - MD

Ragsdale High school - NC

North Paulding High School - GA  
Apalachee High School - GA  
Winder Barrow High School - GA  
East Coweta High School - GA

Oxford High School - MS

Benbrook Middle-High School - TX  
Harlan High School - TX



# J1 Public School Flyer



## Shawnee Mission East High School

### Shawnee Mission East High School

<https://smeast.smsd.org/> | 913-993-6600 | 7500 Mission Road, Prairie Village, KS 66208-4298



#### GENERAL INFORMATION

- School Type: Public
- Grades: 7-12
- Student body: 1753
- Student-Teacher ratio: 19:1

#### COMMUNITY

Shawnee Mission East High School is a public high school in Prairie Village, Kansas, US, for grades 9 through 12. It is one of five high schools operated by the Shawnee Mission School District (Unified School District 512).

Shawnee Mission East High School was established in 1958 in order to serve the growing population of northeast Johnson County, in suburban Kansas City. In January 1994, Shawnee Mission East, along with Shawnee Mission Northwest began offering the International Baccalaureate program.

#### ACADEMIC INFORMATION

**English Support: ESL**

**Ave. SAT: 1330**

**Ave. ACT: 28**

**Foreign Languages:** Spanish, Chinese, Latin etc.

- **AP Courses :** English Language & Composition, English Literature & Composition, Spanish I & II, Biology, Calculus, AB & BC Chemistry, Computer Science A, Statistics, Environmental Science, Physics, Macroeconomics, Microeconomics, European History, United States History, Psychology, French,
- **Honors Courses:** Geometry, Pre-Calculus, Calculus, Algebra, Computer Science Principle, Advanced Programming Concepts, Music Theory, Physics, American Government, World Regional Studies, Chinese, French,



Shawnee Mission East High School is a top rated, public school located in Shawnee Mission, KS. It has 1,753 students in grades 7-12 with a student-teacher ratio of 19 to 1. According to state test scores, 50% of students are at least proficient in math and 55% in reading. Shawnee Mission East High is ranked fourth within Kansas. Students have the opportunity to take Advanced Placement® coursework and exams. The AP participation rate at Shawnee Mission East High is 50%. The total minority enrollment is 14%, and 9% of students are economically disadvantaged. Shawnee Mission East High is 1 of 5 high schools in the Shawnee Mission Pub Sch. #5 in Best Public High Schools in Kansas with NICHE ranking A+. Shawnee Mission East is a member of the Kansas State High School Activities Association and offers a variety of sports programs. Athletic teams compete in the 6A division and are known as the Lancers. Extracurricular activities are also offered in the form of performing arts, school publications, and clubs.

#### SPORTS

**Fall:** Cross-country, Football, Golf, Soccer, Tennis, Volleyball, Cheerleading, Field Hockey

**Winter:** Basketball, Ice Hockey, Swimming & Diving, Indoor Track, Wrestling, Dance Team

**Spring:** Baseball, Softball, Lacrosse, Tennis, Track

#### CLUBS AND ACTIVITIES

American Sign Language, Art Club, Bollywood Dance Club, Chemistry Club, Chinese Club, Disc Golf, Diversity & Inclusion, Fashion Club, FCCLA, Fantasy Football Club, Feminist Club, French Honor Society, Gaming Club, Happy Club, Math Club, Latin Club, Model UN Club, Ukulele Club, SLAB, Young Republicans, Stem Club etc.

#### Location Information

**Nearest Airport:** Kansas City International Airport

**Nearest Major Cities:** Kansas City (20mins)

**Typical Weather:** Warm, humid temperature climate with hot summers and no dry season

**Attractions Nearby:**



# Host family flyer

## The Hill Family

### The Hill Family



AnB Education  
www.anbeducation.com



Host Dad		Host Mom	
Name	Joshua	Name	Emily
Birth Year	1971	Birth Year	1969
Industry	Executive Recruiter - Manager	Industry	Local Coordinator
Religion	Christian		
Pets	2 dogs		
Hobbies	Camping, hiking, crafts, art, reading, sports		

Other Residents	Birth Year	Relation to Host(s)	Gender	Occupation
Nash	2002	Son	Male	High School Student
Noah	2002	Son	Male	High School Student
Sasha	2004	Daughter	Female	High School Student

#### NOTE FROM FAMILY :

Hello, we are the Hills, Josh & Emily, Nash, Noah, and Sasha. We are so excited that you are coming to America for the school year! Our family attend a private, Christian school. All three of our children are in high school. Our twin boys are very involved in school sports. Our boys also like to compete in fitness (youth body building) contests. Noah competes in duatlions and triatlons. Sasha likes to sew and quilt. Even though you will be attending our public high school, we will attend your school sports activities to support you! We are very involved in our church's boy scout and girl scout programs. You are welcome to join us for scouts on Wednesday evenings at our church! We work on woodworking projects, cooking, and weekend camp outs with the troop. We go to church youth group every Sunday evening. The high school youth group is fun & supportive. Most of the kids attend public schools in Missouri. Any extra time we have, we are at Lifetime Fitness (our family gym), working out! We take Mandarin Chinese lessons every Saturday. If you speak Mandarin, hopefully you can understand our Chinese! We can't wait to meet you!

**Preferred Gender:** No preference

**Currently Hosting a Student?** Yes

**Willing to take from your agency:** 2

#### Location Information

Address (City, State)	Kansas City, MO
Distance From School	6 miles
School Transportation	School bus
Nearest Airport	Kansas City International Airport
Nearby Attractions	Nelson-Atkins Museum of Art, Kansas City Zoo, Lifetime Fitness, Old Missouri Town-Living History, Emanuel Baptist Chinese Church



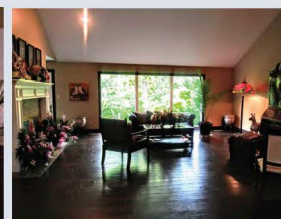
### The Hill Family



AnB Education  
www.anbeducation.com



House Information	
Description of House	Single Family Home
House Features	5 Bedrooms, 4 Bathrooms, Wi-Fi, Laundry



---

# Interview with a J-1 student

---

Kim, from Korea (Thompson High School)

## What made you decide to apply for the J-1 exchange program?

I love learning new languages and cultures. A few years ago, I won a Japanese speaking contest. At that time, my school teacher suggested that I go to an English speaking country and experience Western culture and bigger world. And at that time, my mom heard about AnB's J-1 exchange program, and it sounded really fascinating to me.

## How was your school life in America?

My school life in America was like a dream. At first, I was not good at English enough to communicate without any problem, so adjusting to a new life was a little hard. However, I became more and more close to friends by doing various activities together, which naturally led me to improve my English. Especially for one year, I have had various experiences and made happy memories with my friends through lots of events such as Alzheimer's fundraiser, nursing home performance, Halloween party, Christmas chorus concert, volunteer work for disabled students, Birmingham Orchestra, and Martin Luther King Parade.





### **How was your life with your host family?**

My host family was the best. They treated me like a real family member with love. My host mom often asked me what kind of new friends I made at school, and she genuinely cared about me. I had the flu once, and my host mom took such good care of me that I was happy while I was sick.



### **What is your future career and plan?**

Based on the valuable experiences I learned through this exchange program, I want to dream big and see the world a little further. I want to go to Japan for college. And I will be able to introduce American culture and its wonderful character. Through this experience, I believe that I will be able to adapt to the new environment easily and happily.

# Interview with a J-1 student

Lee, from Korea (Harlan High School)



## What made you decide to apply for the J-1 exchange program?

Last year, I went abroad with my family and saw how people enjoy their leisure time and cultural life. Their lifestyle of leisurely living with family, friends, or alone has become attractive to me, and it made me want to know more about this culture. Then my dad heard about AnB Education's public exchange program, and it sounded very interesting. Of course, I knew I had to be independent in order to successfully complete the program, but I was more excited to experience a new culture.



## How was your school life in America?

At first, I was really busy. Even if I wanted to speak quickly, I couldn't express it in detail in English and it was hard to understand if my friends said something too quickly. I tried hard to hang out with my friends. Thankfully, I met a lot of good friends, and they patiently followed my pace and helped me in many ways. We became best friends for sure.



### **How was your life with your host family?**

My host family and I did a lot of things together. Cooking, baking, movies , puzzles, shopping, and churches. All these events opened the door for me to experience American culture directly, and we had great memories together. I especially liked conversations with my host mom every evening while cooking together. Also, during Halloween and Thanksgiving holidays , I invited my friends, and host family invited relatives to our home and we played games together. It was an unforgettable memory.



### **What is your future career and plan?**

Through this experience, I thought it would be good for me to go to school in America. The culture and lifestyle of the American people fit me well, and I think I can expand my dream here. My dream is to become a pharmacist, so I am currently looking into which university to go to and how to prepare to become a pharmacist in the near future.



## Precious moments with host family

Here are photos of AnB students who are currently attending public high schools in the J-1 program.





## Precious moments with host family



*Made  
with  
Love*





**THANK YOU**